



Presbyterian  
FOUNDATION 

*2018 Annual Report*

GROWING  
*Vibrant*

PRESBYTERIAN COMMUNITIES

**PICTURED:** Rev. Shauna Bowman leads a service at Friendship Presbyterian Church in Chicago, Illinois.

**PHOTO BY:** Gregg Brekke



# **GROWING** *Vibrant* **PRESBYTERIAN COMMUNITIES**

## **OUR MISSION**

A vital part of the Presbyterian Church (U.S.A.), the Presbyterian Foundation cultivates, attracts and manages financial resources of individuals and institutions to further Christ's mission.

### **THE PRESBYTERIAN FOUNDATION CONTINUALLY STRIVES TO HEED GOD'S CALL BY:**



Expanding Our Partnership with Presbyterian Congregations



Facilitating Presbyterian Generosity Through Technology



Connecting People with Mission and Ministry



Responsibly Stewarding Presbyterian Mission



Creating Legacies For Generations to Come



## MESSAGE FROM THE PRESIDENT

### DEAR FRIEND:

*What are you called to do with all that God has given to you?*

*How might the Presbyterian Foundation help?*

I think about these questions every day as I meet with faithful Christians throughout the U.S. and around the world, and as I visit those doing mission and ministry with the people they have been called to serve. From Pakistan to Palestine, from Taiwan to Colombia, Presbyterians are doing vitally important mission in partnership on a global scale. Presbyterians also do so much right here at home, in major urban centers and small rural towns – and everything in between.

Presbyterian churches and their members are such a key part of the spirit of generosity in the U.S. and abroad, as we follow in the footsteps of saints who have gone before us to build sustained and life-giving ministries that we continue and add to today. Food pantries, homeless shelters, schools, youth centers, community gardens and every other kind of ministry are at the heart of our congregations and Mid-council ministries.

Your gifts and stewardship support work like this and so much more. Having the privilege and opportunity to see the impact of such ministry first hand gives me passion every day in my own work serving the PC(USA). Seeing so many of you faithfully and creatively carry out what God has called you to do makes me proud to be a Presbyterian.

What can we do to help? We really do want to know. Our conversations with Presbyterians across the country over the past several years have yielded remarkable new programs and vehicles to help them more effectively find more resources for the missions and ministries they do. Your ideas and expressed needs have helped us shape our work to help thousands of ministries thrive. So contact us. You can reach our Ministry Relations Officers at [presbyterianfoundation.org/mro](http://presbyterianfoundation.org/mro), or call us at 800-858-6127.

And truly, thanks for your faithfulness.

In Christ,



**TOM TAYLOR**  
President and CEO

# \$82M

FOUNDATION FAMILY NEW GIFTS  
AND INVESTMENTS IN 2018

**PICTURED:** Children gather to greet Tom Taylor and other Presbyterian visitors from the U.S. at the Presbyterian Education School in Pakistan.

**PHOTO COURTESY OF:**  
Forman Christian College



## EXPANDING OUR PARTNERSHIP WITH PRESBYTERIAN CONGREGATIONS

The Presbyterian Foundation faithfully seeks to create partnerships with the congregations we serve. We help spread generosity through Presbyterian congregations, and we help establish legacies that make a meaningful difference in the lives of many. Our shared faith and values inspire us to answer the call to serve the broader Presbyterian community.

### NUMBER OF PRESENTATIONS MADE BY MINISTRY RELATIONS OFFICERS IN 2018

97

PLANNED GIVING

52

INVESTMENT

19

ONLINE GIVING

43

FOUNDATION 101

106

STEWARDSHIP



**PICTURED:** Worship at East Liberty Presbyterian Church in Pittsburgh, Pennsylvania.

**PHOTO BY:** Craig Thompson Photography

THE



Foundation

IN ACTION

### STEWARDSHIP KALEIDOSCOPE

The Foundation is a premier sponsor of Stewardship Kaleidoscope, our denomination's annual conference promoting stewardship through workshops, speakers and networking. By supporting this event, we help bring leadership insights and practical tools that encourage generosity across Presbyterian congregations.

### PROJECT REGENERATION

While emotionally challenging, the sale of a church building or other church assets can be an opportunity to fund ministry for future generations, and as a legacy of the congregation itself. The Foundation partners with congregations and Presbyteries during this difficult process to explore the creative options available, and to help turn what may have become a financial burden into one of God's most meaningful blessings.

**PICTURED:** Worship at Celtic Cross Presbyterian Church  
in Sacramento, California.

**PHOTO BY:** Kevin Fiscus





**PICTURED:** Rev. Cathy Hoop baptizes a child during worship at Grace Prebyterian Church in Tuscaloosa, Alabama.

**PHOTO BY:** Craig Thompson, Disciple Design





## FACILITATING PRESBYTERIAN GENEROSITY THROUGH TECHNOLOGY

Today, more people are utilizing the Presbyterian Foundation as their gift vehicle for ministry and mission than at any other time in our over 200-year history. We partner with churches to share the light of Christ with the world. We provide theologically and financially sound advice on stewardship, giving, generosity, capital campaigns, and much more. One example, our Online Giving Fund, allows churches to accept online gifts. In 2018, we experienced a 60 percent increase in the number of online gifts to churches, making it our fastest-growing platform for giving.

662

NUMBER OF CHURCHES AND  
MINISTRIES USING ONLINE  
GIVING PLATFORM

33,828

NUMBER OF GIFTS RECEIVED  
THROUGH ONLINE GIVING

\$5M

DOLLAR AMOUNT OF  
TOTAL GIFTS RECEIVED  
THROUGH ONLINE GIVING

# THE Foundation IN ACTION

### PROCESSING ONLINE GIVING

The Foundation takes care of processing all online gifts, and validating and reconciling transactions for participants in the Online Giving Program.

### ONLINE GIVING RESOURCES

The Foundation offers resources — bulletin inserts, posters and pew cards — to help promote your Online Giving Fund.



## CONNECTING PEOPLE WITH MISSION AND MINISTRY

Since 1799, the Presbyterian Foundation has strengthened congregations and related mission and ministry efforts by developing gifts and managing funds on their behalf to help expand communities of generosity. We help congregations achieve their philanthropic goals through a wide variety of giving and investment options, including:

Bequests • Donor-Advised Funds • Investment Management Services • Endowment Funds • Life Income Gift Plans • Gifts of Nontraditional Assets

\$68.8M

DISTRIBUTED TO MISSION

37,239

TOTAL GIFTS RECEIVED

5,541

TOTAL NUMBER OF DONORS

\$2M

GIFTS RECEIVED TO DONOR-ADVISED FUNDS

\$1.79B

ASSETS SERVICED

3,716

TOTAL BENEFICIARIES



“The important thing is to make a commitment to continue giving, not how much you give.”

STEVE MATO

**PICTURED:** Sarah and Steve Mato support causes they love through their donor-advised fund at the Presbyterian Foundation.

**PHOTO BY:** Jennifer Winder



**PICTURED:** A member of C.N. Jenkins Memorial Presbyterian Church in Charlotte, North Carolina listens during the worship service.

**PHOTO BY:** Nancy Pierce



**PICTURED:** A member of University Presbyterian Church in San Antonio, Texas prays over her pledge.

**PHOTO BY:** Erin Dunigan



## RESPONSIBLY STEWARDING PRESBYTERIAN MISSION

As Presbyterians we're committed to responsible stewardship. We support mission and ministry through conscientious financial management and investments that are consistent with our faith. In keeping with God's call for faithful stewardship, the Presbyterian Foundation and our subsidiary, New Covenant Trust Company, manage funds while positively impacting our environment and society through three pillars of socially responsibility investing—screening, shareholder advocacy, and transformational investing.

\$1B

TOTAL ASSETS STEWARDED  
BY THE FOUNDATION

\$250M

TOTAL NCTC ASSETS UNDER MANAGEMENT

\$82M

NEW GIFTS & INVESTMENTS  
(INCLUDES \$60.2 MILLION NEW  
NCTC ASSETS UNDER MANAGEMENT)

\$712M

TOTAL ASSETS IN NEW COVENANT FUNDS  
(INCLUDES \$238 MILLION  
FOUNDATION AND NCTC ASSETS)

\$7M

INVESTED TOWARDS  
CLIMATE CHANGE GOALS

# THE Foundation IN ACTION

### SUSTAINABLE INVESTMENT STRATEGIES

We continue to explore new ways to advance environmental awareness through efforts such as direct dialogue with energy companies and filing shareholder resolutions where appropriate. The Foundation now offers a custom fossil-free investment strategy while directing our investment managers to consider environmental, social, and governance (ESG) factors in their security selection process.

### TRANSFORMATIONAL INVESTING

Our Transformational Investment program is an expansive initiative created and designed to help regions such as the Middle East. Through investments in expanded education facilities, renewable energy facilities, a microfinance initiative designed to help facilitate women's empowerment, a life sciences incubator fostering collaboration among Christian, Jewish, and Muslim scientists, and a pilgrimage center at the site of Jesus' baptism, as well as efforts to increase self-sufficiency among Palestinians, we hope to achieve a more stable, peaceful and sustainable region.

### CLIMATE CHANGE SOLUTIONS

In an effort to help mitigate the negative effects of climate change and better care for God's creation, we have committed to invest at least 1 percent of our permanent endowment fund holdings in companies working on climate change solutions such as advancing renewable energy.

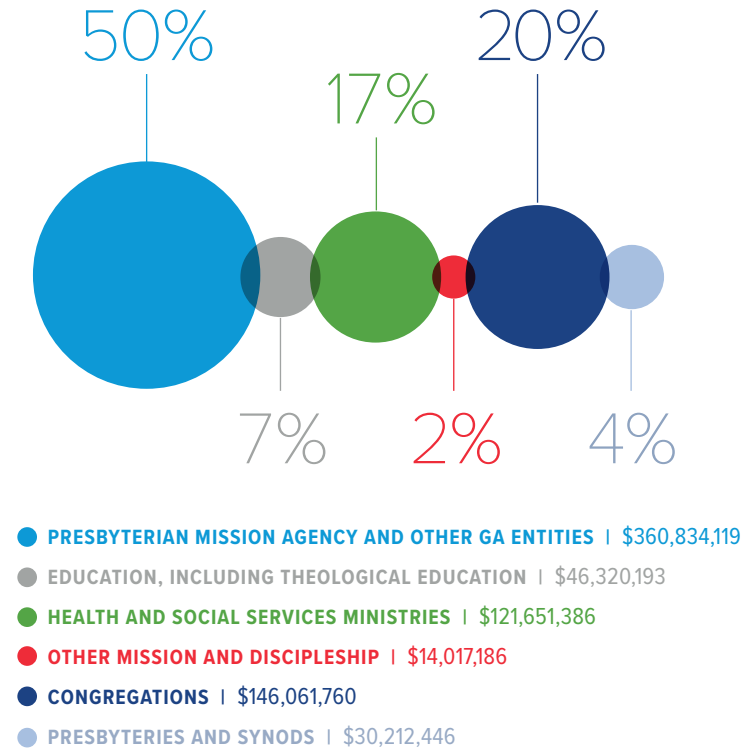


## CREATING LEGACIES FOR GENERATIONS TO COME

With a value of approximately \$700 million in over 7,000 endowment funds that are held and managed by the Presbyterian Foundation, our experience in stewarding gifts from our fellow Presbyterians is unparalleled. Endowments afford donors the ability to express their faith and establish enduring legacies that will be enjoyed by future Presbyterians for generations to come, by sustaining the churches, schools, seminaries, mission or ministries of their choice.

After establishing an endowment with the Foundation, donors receive peace of mind knowing that their gifts will forever benefit the ministry that Christ has called them to support. We seek the highest possible current distribution while providing for sufficient growth of principal to ensure that payments from the endowment fund are as meaningful in the future as they are today.

### PRESBYTERIAN ENDOWMENT FUNDS SUPPORT\*



\*Market value as of December 31, 2018

### PROVIDING SUPPORT FOR MINISTRIES FOR GENERATIONS TO COME

A \$100,000 permanent endowment fund placed with the Foundation in 1980 would have paid out over \$469,302 to mission and have a principal value of \$229,685 at the end of 2018. The average annual investment return was 7.60 percent.





**PICTURED:** A mother and child enjoy time together on Palm Sunday at Idlewild Presbyterian Church in Memphis, Tennessee.

**PHOTO BY:** Craig Thompson, Disciple Design



## FEATURED PARTNERS

Connection is a core value of the Presbyterian Church (U.S.A.). Presbyterians—individually or in congregations—gather together in mission to accomplish far more than they could separately. As a trusted partner in funding mission, the Presbyterian Foundation plays a unique role in helping these ministries accomplish the mission to which God has called them.

### **PRESBYTERIAN AGENCIES AND RELATED BODIES**

- + Presbyterian Church (U.S.A.), A Corporation
- + Presbyterian Church (U.S.A.)
- + Presbyterian Mission Agency
- + Board of Pensions
- + Office of the General Assembly
- + Presbyterian Historical Society
- + Presbyterian Investment and Loan Program
- + Presbyterian Publishing Corporation
- + Presbyterian Women

### **FOUNDATION-RELATED MINISTRIES**

- + Ghost Ranch Education and Retreat Center
- + Jarvie Commonweal Fund
- + Theological Education Fund

### **TRAINING AND PROGRAM PARTNERS**

- + Ecumenical Stewardship Center
- + Horizons Stewardship
- + PEER Network
- + Stewardship Kaleidoscope

### **MISSION AND MINISTRY PARTNERS AND PROGRAMS**

- + American Memorial Church
- + Assistance Programs of the Board of Pensions
- + Bright Stars of Bethlehem
- + Diaconia: ECCB
- + Evangelical Theological Seminary in Cairo, Egypt
- + Freedom Rising
- + Gambell Presbyterian Church
- + God's Hidden Treasures
- + International Museum of the Reformation
- + Jinishian Memorial Program
- + Living Waters for the World
- + National Association of Korean Presbyterian Churches
- + Near East School of Theology
- + Wycliffe Bible Translators
- + And many more





**PICTURED:** A member of Cleveland Korean Church in Cleveland, Ohio participates in worship.

**PHOTO BY:** Gregg Brekke



## PARTNERS IN FUNDING MISSION

The Presbyterian Foundation partners with individual donors and the congregations and mission organizations they support to gather resources, steward gifts and investments, and disburse funds faithfully. It is our ministry to increase funding for mission.

### MINISTRY RELATIONS OFFICERS

Ministry Relationship Officers (MROs) offer work with churches, ministries, mid-councils and individuals. Each one is a seasoned and experienced professional in planned giving, stewardship and church vitality.

**NORTHWEST REGION**  
**ROB HAGAN**  
 888-211-7030  
 rob.hagan@

**UPPER MIDWEST REGION**  
**MINNER SEROVY**  
 855-514-3077  
 minner.serovy@

**CENTRAL REGION**  
**LISA LONGO**  
 866-710-5094  
 lisa.longo@

**MID-AMERICAN REGION**  
**STEPHEN KEIZER**  
 866-317-0751  
 stephen.keizer@

**SOUTHWEST REGION**  
**MAGGIE HARMON**  
 866-860-3383  
 maggie.harmon@

**SOUTH CENTRAL REGION**  
**SHERRY HESTER KENNEY**  
 855-342-4130  
 sherry.kenney@

**NORTHEAST REGION**  
**ELLIE JOHNS-KELLEY**  
 855-251-8212  
 ellie.johns-kelley@

**EAST REGION**  
**OLANDA CARR**  
 888-711-1318  
 olanda.carr@

**SOUTHEAST REGION**  
**ROBERT HAY**  
 855-514-3152  
 robert.hay@

ALASKA  
 HAWAII  
 PUERTO RICO

All Foundation emails:  
first.last@presbyterianfoundation.org

## TRUSTEES | 2018

**VICTOR ALOYO, JR.**

Kendall Park, New Jersey

**WONJAE CHOI**

Warrington, Pennsylvania

**BRIDGET-ANNE HAMPDEN**

Charlotte, North Carolina

**STEPHEN KELLY**

Lexington, Kentucky

**JASON KO**

Cypress, California

**EUSTACIA MOFFETT MARSHALL**

Philadelphia, Pennsylvania

**GREG MCCOY**

Fort Worth, Texas

**MICHELE MINTER**

Plainsboro, New Jersey

**DIANE GIVENS MOFFETT\***

Louisville, Kentucky

**JOE MORROW\*\***

Chicago, Illinois

**SAM MUSE**

Carmel, Indiana

**JOHN NELSEN**

El Paso, Texas

**J. HERBERT NELSON II\***

Louisville, Kentucky

**MALCOLM NIMICK**

Sewickley, Pennsylvania

**ERIC OSBORNE**

Nashville, Tennessee

**NEAL PRESA**

Carlsbad, California

**TERRY RAPPUHN**

Nashville, Tennessee

**CLAIRE RHODES**

Hot Springs, Arkansas

**PAUL ROBERTS, SR.**

Atlanta, Georgia

**RUTH FAITH SANTANA-GRACE**

Philadelphia, Pennsylvania

**KATHY TROTT**

Woodland, California

**DAVID ZIMMERMAN**

Santa Barbara, California



**PICTURED:** Members of the 2018 Board of Trustees of the Foundation pose for a photo together at a board meeting.

**PHOTO BY:** Erin Dunigan

\**Ex officio Trustee*

\*\**Presbyterian Mission Agency/Board Liaison*

**PICTURED ON FRONT COVER:** A family worships together at Statesville Avenue Presbyterian Church in Charlotte, North Carolina.

**PHOTO BY:** Nancy Pierce

**PRESBYTERIAN FOUNDATION**

200 East Twelfth Street  
Jeffersonville, Indiana 47130

Toll free: 800-858-6127  
[presbyterianfoundation.org](http://presbyterianfoundation.org)

---

17.02.19.1

Presbyterian  
FOUNDATION 